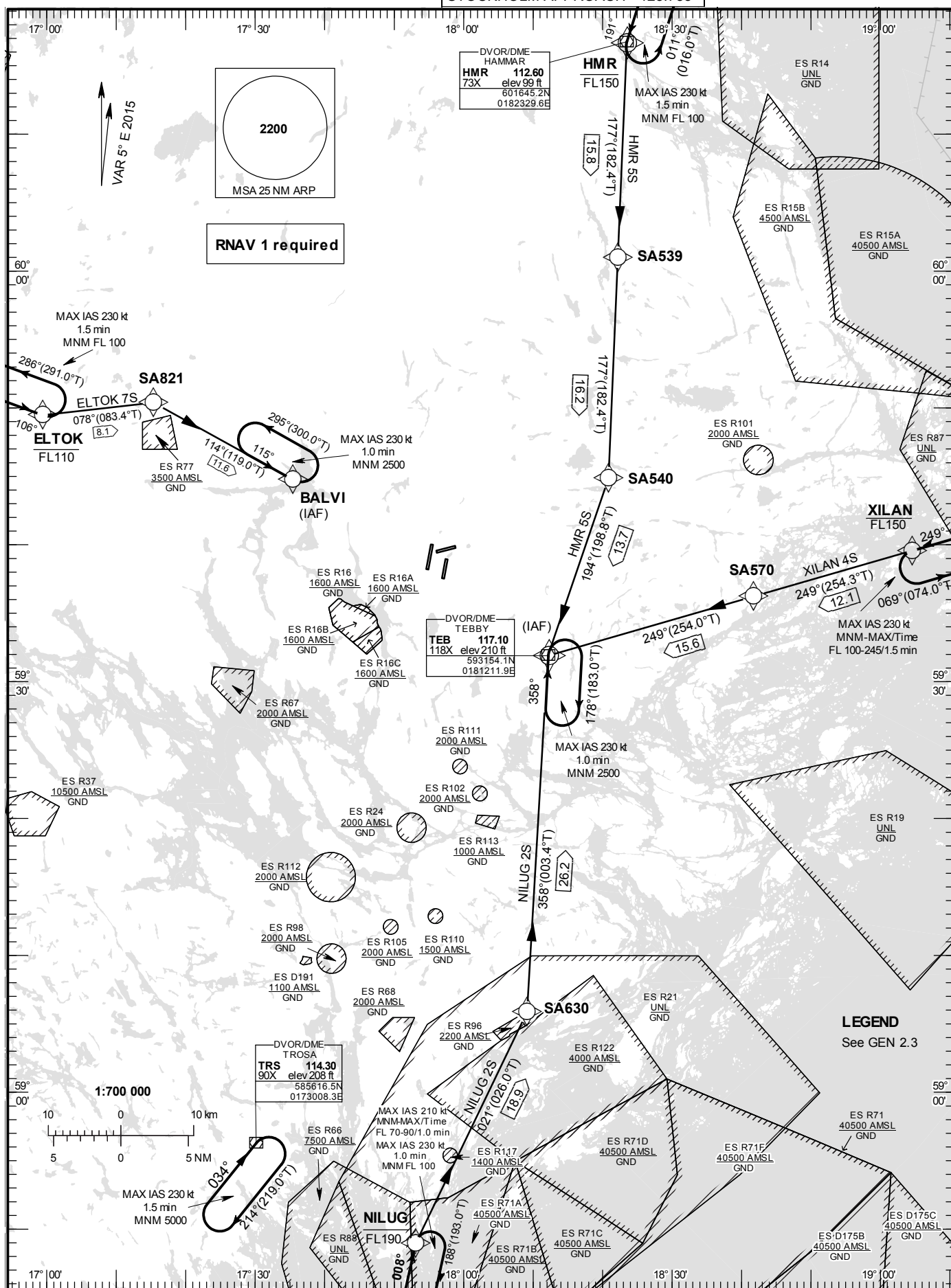


STOCKHOLM/Arlanda
RNAV (DME/DME or GNSS)
STAR RWY 08

**STANDARD INSTRUMENT
ARRIVAL CHART (STAR) -
ICAO**

HGT and ALT in ft
BRG are MAG (True)
TA 5000 ft AMSL

ARLANDA TOWER	118.505
ARLANDA ATIS ARR	119.005
STOCKHOLM APPROACH	123.755



STOCKHOLM/Arlanda**Prescribed Coding of RNAV STAR for RWY 08****REMARK**

Aircraft to STOCKHOLM/Arlanda shall not be operated at an airspeed of more than 250 kt IAS below FL100 unless otherwise instructed.

Clearance limit is normally the IAF.

From IAF aircraft will be radar vectored to final approach.

In case of radio communication failure, see AD 2.22 para 3.

All RNAV STARs are based on GNSS or DME/DME for position update.

ELTOK 7S

Path Term	Waypoint Identifier	Fly-over	Course °M(°T)	Dist (NM)	Turn Dir	Rest Alts (ft AMSL)	Speed Limits (kt)	VPA/RDH (°/ft)	Rec Navaid	Navigation Specification
IF	ELTOK	-	-	-	-	-FL110	-	-	-	RNAV 1
TF	SA821	-	078°(083.4°)	8.1	-	-	-	-	-	RNAV 1
TF	BALVI	-	114°(119.0°)	11.6	-	-	-	-	-	RNAV 1

STAR instruction: ELTOK (FL110 or below) – SA821 – BALVI

HMR 5S

Path Term	Waypoint Identifier	Fly-over	Course °M(°T)	Dist (NM)	Turn Dir	Rest Alts (ft AMSL)	Speed Limits (kt)	VPA/RDH (°/ft)	Rec Navaid	Navigation Specification
IF	HMR	-	-	-	-	-FL150	-	-	-	RNAV 1
TF	SA539	-	177°(182.4°)	15.8	-	-	-	-	-	RNAV 1
TF	SA540	-	177°(182.4°)	16.2	-	-	-	-	-	RNAV 1
TF	TEB	-	194°(198.8°)	13.7	-	-	-	-	-	RNAV 1

STAR instruction: HMR (FL150 or below) – SA539 - SA540 – TEB

NILUG 2S

Path Term	Waypoint Identifier	Fly-over	Course °M(°T)	Dist (NM)	Turn Dir	Rest Alts (ft AMSL)	Speed Limits (kt)	VPA/RDH (°/ft)	Rec Navaid	Navigation Specification
IF	NILUG	-	-	-	-	-FL190	-	-	-	RNAV 1
TF	SA630	-	021°(026.0°)	18.9	-	-	-	-	-	RNAV 1
TF	TEB	-	358°(003.4°)	26.2	-	-	-	-	-	RNAV 1

STAR instruction: NILUG (FL190 or below) – SA630 – TEB

XILAN 4S

Path Term	Waypoint Identifier	Fly-over	Course °M(°T)	Dist (NM)	Turn Dir	Rest Alts (ft AMSL)	Speed Limits (kt)	VPA/RDH (°/ft)	Rec Navaid	Navigation Specification
IF	XILAN	-	-	-	-	-FL150	-	-	-	RNAV 1
TF	SA570	-	249°(254.3°)	12.1	-	-	-	-	-	RNAV 1
TF	TEB	-	249°(254.0°)	15.6	-	-	-	-	-	RNAV 1

STAR instruction: XILAN (FL150 or below) - SA570 – TEB